



COMPANY PROFILE





SECTION 1: POWER HOUSE	SECTION 16: WATER DESALINATION PLANTS
SECTION 2: VISION AND MISSION	SECTION 17: WELL PRODUCTION SERVICES
SECTION 3: PRODUCTS AND SERVICES	SECTION 18: MULTIPHASE PUMPING SYSTEMS
SECTION 4: OUR PROJECTS	SECTION 19: ELECTRICAL PRODUCTS & SERVICES
SECTION 5: DIESEL AND GAS GENERATOR PACKAGES	SECTION 20: ELECTROMECHANICAL CONTRACTING
SECTION 6: GAS COMPRESSOR PACKAGES	SECTION 21: METALWORKS AND FABRICATION
SECTION 7: AIR COMPRESSORS	SECTION 22: INSPECTION & TESTING SERVICES
SECTION 8: STATIC EQUIPMENT	SECTION 23: CLIENT TESTIMONIALS
SECTION 9: BI-FUEL CONVERSION SYSTEM	SECTION 24: OUR PEOPLE
SECTION 10: TYPICAL PERFORMANCE	SECTION 25: OIL AND GAS SECTOR
SECTION 11: BI-FUEL SOLUTION	SECTION 26: NON OIL AND GAS SECTOR
SECTION 12: WATER EVAPORATORS	SECTION 27: OUR PARTNERS
SECTION 13: PUMP PACKAGES	SECTION 28: INTEGRATED SERVICE PROVIDER
SECTION 14: NITROGEN GENERATION PACKAGES	SECTION 29: ELECTROMECHANICAL
SECTION 15: WATER FLOODING SYSTEMS	SECTION 30: CONTACT US

SECTION 1



Founded in 1993

Headquartered in the 6th of October city (Cairo)
Free zone near Suez.

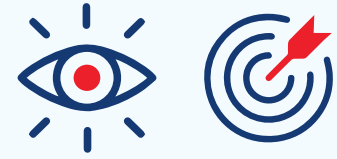
Iso-Certified

Integrated service provider and packager delivering Turnkey solutions

Oil & Gas services, Power Generation, Pumping services,
Electromechanical contracting & water desalination.

**Focused on achieving highest cost savings,
fastest lead time and top quality solutions
for our clients.**

VISION AND MISSION



⚡ To earn the highest levels of customer satisfaction and trust.

⚡ To contribute to the Egyptian economy by creating jobs and business opportunities.

⚡ To pursue the transition towards clean energy generation.

⚡ To foster mutually rewarding customer relationships.

⚡ To become a public joint-stock company and a leading regional provider of power and engineering solutions.

PRODUCTS AND SERVICES



IN STOCK EQUIPMENT-READY FOR RENTAL MAINTENANCE, REPAIR AND OPERATIONS.



**DIESEL AND GAS
GENERATORS**



**AIR AND GAS
COMPRESSORS**



PUMPS



**OTHER OIL
AND GAS
SERVICES**



**ELECTRICAL
SERVICES**



**ELECTRO
MECHANICAL
CONTRACTING**

DIESEL AND GAS GENERATOR PACKAGES

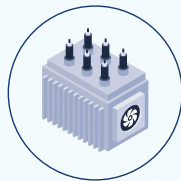


- ⚡ **Large fleet of new and used generators available in stock today.**
- ⚡ **30+ years** years experience in maintenance, repair, and operations (**MRO**) and in packaging engines (Alternators, Radiators, Skids, Certified Containers including Gas Detection, Fire Alarm, Fire Fighting Systems and Synchronization Panels)
- ⚡ **Large power range: 150 to 30,000 KVA (50 or 60 Hz).**

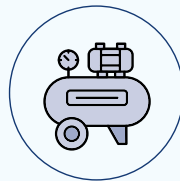
OUR PROJECTS

200+
PROJECTS
SINCE 1993

400+
EMPLOYEES



**POWER
GENERATION**



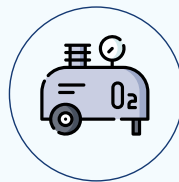
**GAS
COMPRESSION**



**PUMPING
SERVICES**



**WATER
DESALINATION**



**AIR
COMPRESSION**

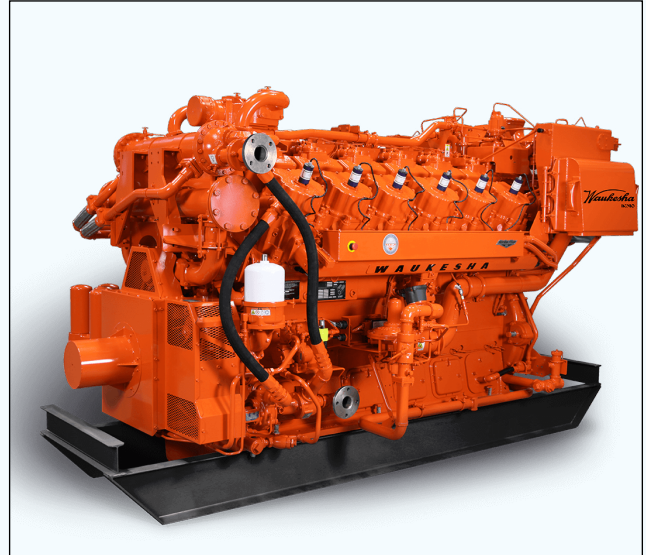


**OTHER
SERVICES**

OUR PROJECTS

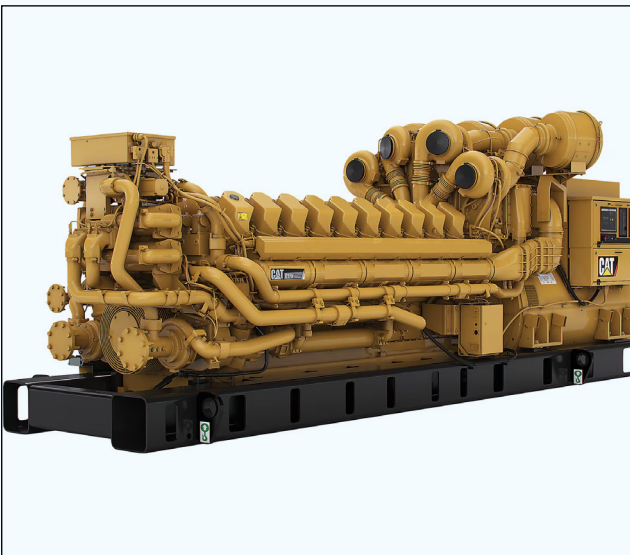


200+ DIESEL GENERATORS



30+ GAS GENERATORS

Equipped with gas trains and gas filtration skids.



**COMBINED FUEL (DIESEL/GAS)
GENERATORS**

conversion of diesel generators into
combined fuel generators.





**POWER STATION (GAS GENERATORS)
AGIBA PETROLEUM-COMPANY (SWM FIELD)**

3 synchronized gas generators (1 MW each) and 2 diesel generators (1.25 MW each).



1.5 MW POWER STATION–PETROBEL

Synchronized diesel and gas generators.



10MW POWER STATION (DIESEL GENERATORS)–EGYPTIAN STEEL CO.

Synchronized diesel generators power station (including 22,000 V step-up transformers, cables, fuel tanks, and synchronization panels).



GAS COMPRESSOR PACKAGES

IN STOCK EQUIPMENT-READY FOR RENTAL MAINTENANCE, REPAIR AND OPERATIONS.



GAS LIFT PROJECT (AMAL PETROLEUM COMPANY)

Ariel **gas compression package** for gas lift delivering 8 MMSCFD from 150 PSI suction pressure to 1800 PSI discharge pressure. the package includes a glycol dehydration unit to reduce gas moisture content from 1400 PPM to 150 PPM.



GAS LIFT PROJECT (WEPCO, BADR-1 FIELD)

Dresser-rand **reciprocating gas compressor** for gas lift delivering 5 MMSCFD gas from 37 PSI suction pressure to 1300 PSI discharge pressure to increase crude oil production.



BOOSTER GAS COMPRESSOR TURNKEY PROJECT

Customer: general petroleum company (western desert) rental of booster gas compressor to boost 5 MMSCfD gas from 1.5 bar suction pressure to 68 bar discharge pressure.



VARIABLE INLET PRESSURE GAS COMPRESSOR (ELECTRIC MOTOR DRIVEN)

Suitable for hazardous areas. ideal when more feed gas pressure (up to 1,000 PSI) is needed to transfer gas between two locations or for gas lift to increase crude oil production through gas injection.

AIR COMPRESSORS

RENTAL - PURCHASE - MAINTENANCE - REPAIR AND OPERATIONS

- ⚡ **DIESEL AND ELECTRICAL-DRIVEN AIR COMPRESSORS.**
- ⚡ **OIL-FREE AND OIL-FLOODED AIR COMPRESSORS.**
- ⚡ **ROTARY-SCREW AND CENTRIFUGAL AIR COMPRESSORS.**
- ⚡ **REFRIGERATED AND DESICCANT AIR DRYERS.**

**More details about our Sullair Air Compressors are available in a separate presentation.*



SULLAIR® AIR COMPRESSORS are the perfect solution for gas compression and drilling for offshore rigs and inland locations, with proven performance even in the most demanding and harshest of environmental conditions.

STATIC EQUIPMENT

IN STOCK EQUIPMENT READY FOR RENTAL

POWER HOUSE offers a diverse fleet of static equipment for downstream wellhead operations including:

3-Phase separators with various pressure ratings for oil, water, and gas separation before treatment.

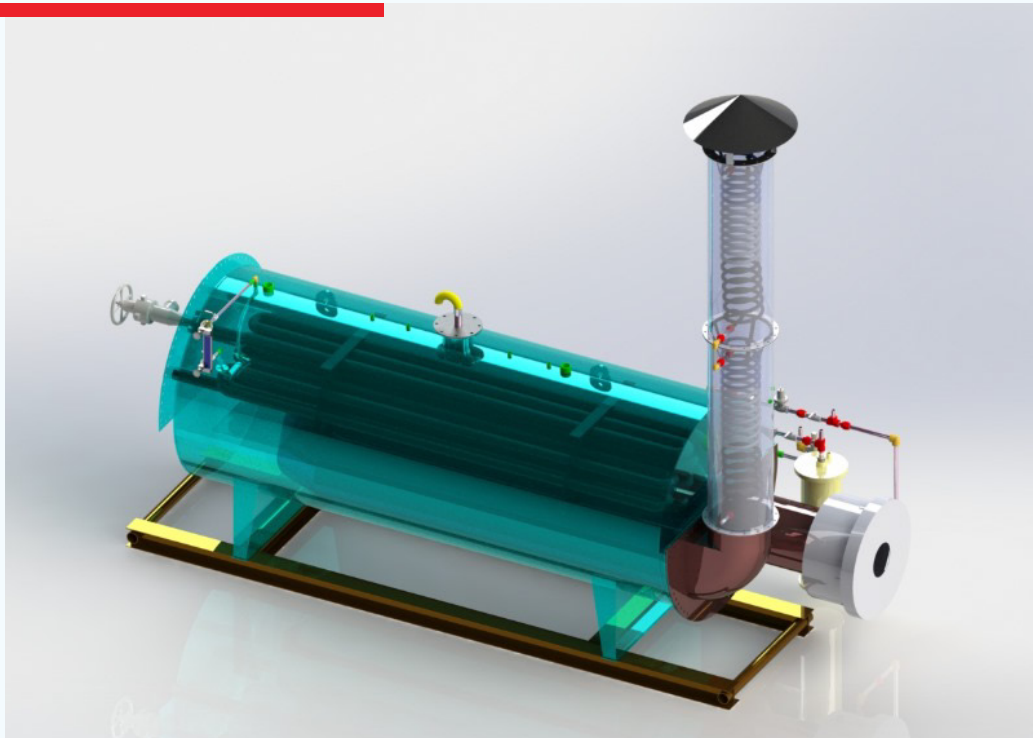
Indirect heaters for reduction of water and salt content in crude oil.

Gas production units (GPUs) to aid in gas production from low-productivity wells.

Dehydration units for water and moisture separation from produced gases.

Low temperature separation (LTS) systems for gas depressurization for condensate reduction from produced gas.

API standard 650 tanks for oil storage.



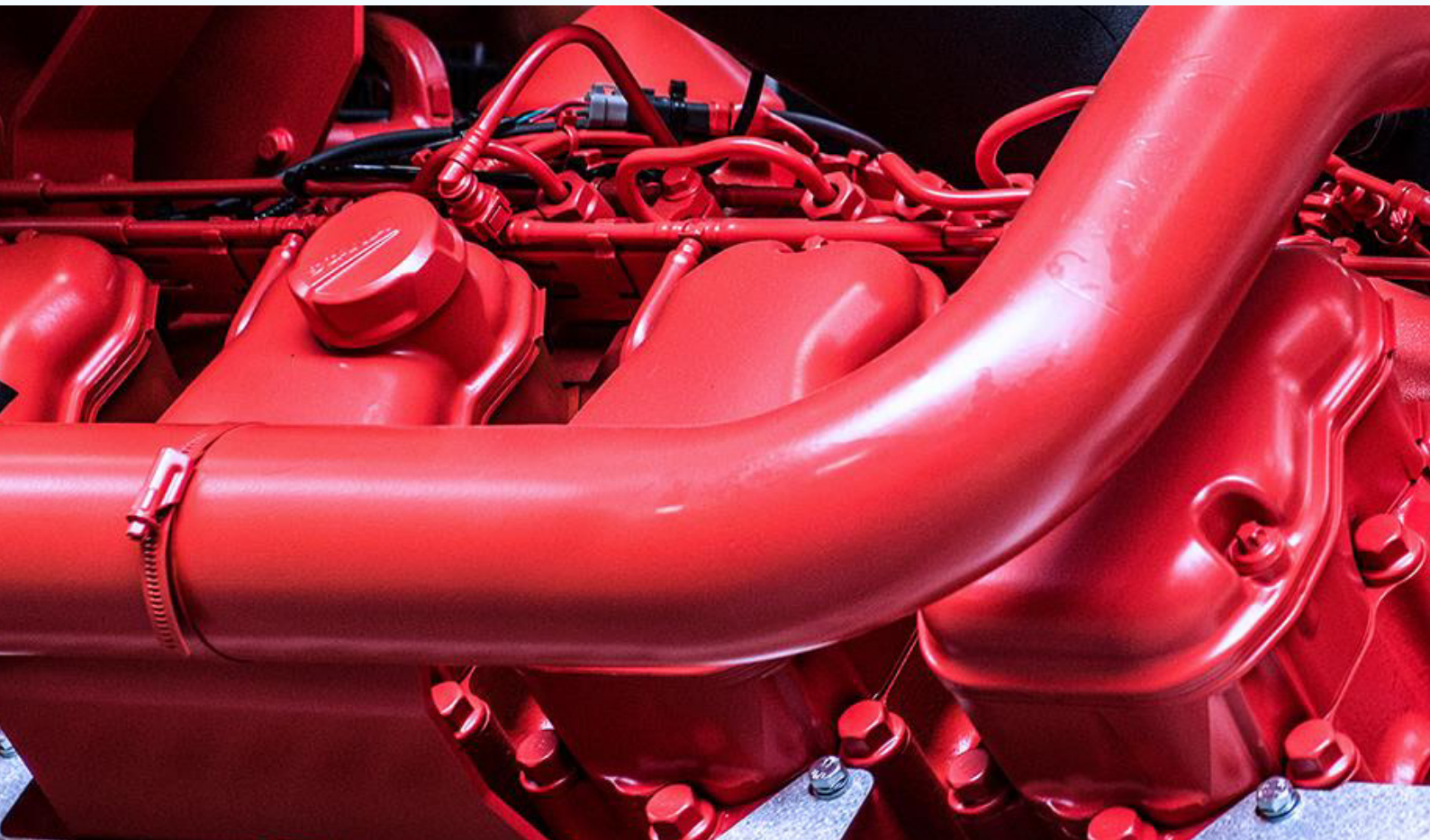
INDIRECT HEATER



**3-PHASE SEPARATOR PRODUCING
4,000 BARRELS PER DAY OIL
AND 0.5 MMSCFD OF ASSOCIATED GAS.**
Customer: Dublin international petroleum EGYPT.

WHAT IS COMAP BI-FUEL CONVERSION SYSTEM

- ⚡ **A solution that converts conventional diesel engines into dual-fuel engines**
- ⚡ **It allows the engine to run on a combination of diesel and gas without major modifications.**



BENEFITS OF DUAL FUEL ENGINES

 **Diesel bill reduction**


 **Fuel flexibility**

 **Fast load response**

 **Simple maintenance**

 **Emissions reduction**

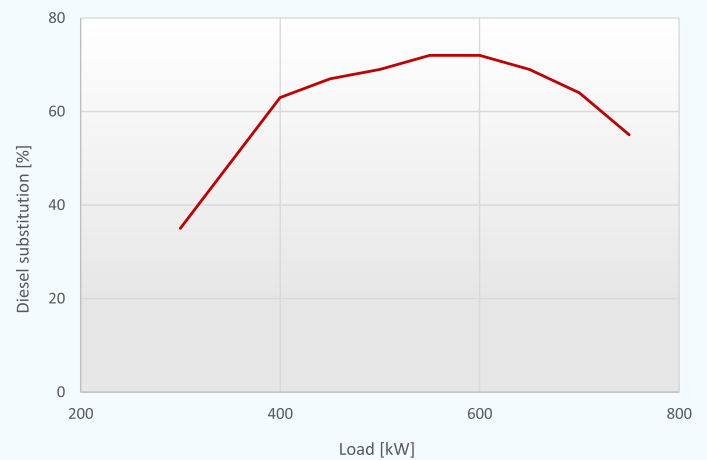
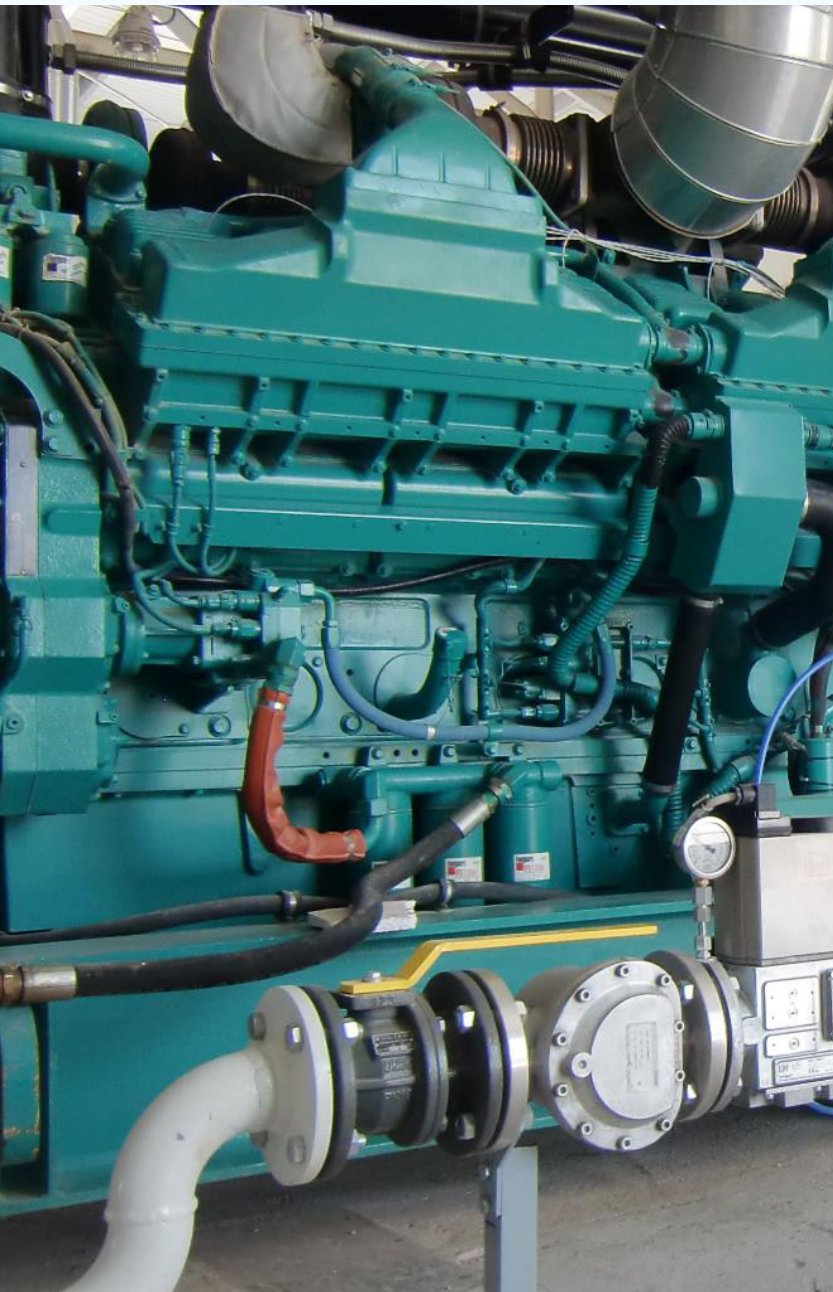
 **Ability to run on gas of various quality**

 **Affordable – small CAPEX**

 **Short lead time**

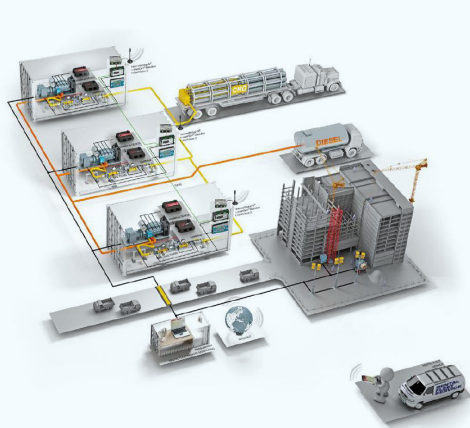
TYPICAL PERFORMANCE

- ⚡ Diesel substitution by up to 70%
- ⚡ Sweet spot at 60% – 80% load

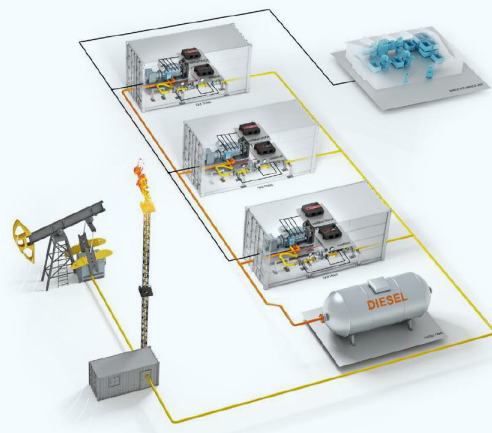


BI-FUEL SOLUTION

The ComAp integrated solution offers control over the diesel/gas ratio and generator paralleling, with centralized monitoring. In areas lacking established gas infrastructure, virtual pipelines using CNG or LNG trucks provide gas distribution. Intelligent utilization of gas from virtual pipelines allows diesel generators to operate on 100% diesel. The bi-fuel system substitutes diesel with natural gas, utilizing gas that would otherwise be wasted during oil production. ComAp's IntellBiFuel solution employs a new algorithm to optimize the diesel/gas ratio for enhanced performance and safety during bi-fuel operation.



**VIRTUAL PIPELINE
GAS DISTRIBUTION**



**POWER GENERATION
USING FLARE GAS**

WATER EVAPORATORS

RENTAL PURCHASE LEASE TO PURCHASE TIONS

A truly versatile piece of equipment, it consists of a powerful fan with an adjustable inclination angle. Water is pumped into the nozzles which is then sprayed and evaporated by the air flow ducted from a powerful fan. Environmental, health, and safety applications include:

- ⚡ Evaporating produced wastewater in oil and gas fields.
- ⚡ Controlling and reducing dust in construction, industrial and mining sites
- ⚡ Mitigation of coal or wood self-ignition by cooling hot dry weather.



PUMP PACKAGES

READY FOR RENTAL, MAINTENANCE, REPAIR AND OPERATIONS

DIESEL & ELECTRIC-DRIVEN PUMPS

Centrifugal (Single-stage, Multistage/Submersible).

Positive Displacement (Gear, Plunger).

APPLICATIONS

⚡ Crude Oil Pumping.

⚡ Water Disposal.

⚡ Water Flooding.

⚡ Water Treatment.

⚡ Water Injection.

PUMP PACKAGES

READY FOR RENTAL, MAINTENANCE, REPAIR AND OPERATIONS



**CRUDE OIL SHIPPING
PUMPING STATION (PETROBEL)**



**WATER INJECTION PUMPING STATION
(AGIBA: MELIHA FIELD)**

BYRON JACKSON PUMPS DISPOSING 20,000 BPD OF WATER
IN A DISPOSAL WELL AT A 750 PSI DISCHARGE PRESSURE



**CRUDE OIL PUMPING STATION
(BAPETCO: NEAG-1 FIELD)**

CRUDE OIL SHIPPING AT 15,000 BPD AND 6,000 BPD

NITROGEN GENERATION PACKAGES

• RENTAL • PURCHASE • MAINTENANCE, REPAIR AND OPERATIONS

CUSTOMER: PETROJET

- ⚡ **Diesel-driven Sullair® Air Compressors & Nitrogen Generation Unit (NGU) package inside DNV-certified container**
- ⚡ **Delivering 2,000 Cubic Feet of Enriched Nitrogen per hour.**
- ⚡ **Includes one Diesel Generator (CAT C9).**



WATER FLOODING SYSTEMS

- BOO • BOT • MAINTENANCE, REPAIR AND OPERATIONS

water flooding is a form of oil recovery wherein the energy required to move the oil from the reservoir rock into a producing well is supplied by water injection from the surface (and its induced pressure).



SKIM TANKS–DAPETCO



WATER FILTRATION & PUMPS AREA–DAPETCO

WATER DESALINATION PLANTS

• BOO • BOT • MAINTENANCE, REPAIR AND OPERATIONS

- ⚡ **Removal of mineral components from saline water (seawater or other brackish water) through reverse osmosis technology.**
- ⚡ **Involves applying pressure to induce water permeation through a membrane while filtering salts.**
- ⚡ **Reverse osmosis plant membrane systems typically use less energy than thermal desalination processes.**

THE WATER FLOODING SYSTEM CONSISTED OF:

- ⚡ BOOSTER PUMPS
- ⚡ PRODUCED WATER TANK
- ⚡ HYDROCARBON ELIMINATION SYSTEM
- ⚡ MAIN FILTRATION SYSTEM
- ⚡ CARTRIDGE FILTER AT WELLHEAD
- ⚡ CHEMICAL TREATMENT SYSTEM
- ⚡ POWER SUPPLY AND CONTROL PANEL



BOO WATER DESALINATION STATION (CAPACITY OF 1,200 M3 PER DAY)

– MAKADI RESORT (HURGHADA)

Water Desalination Systems

◇BOO ◇BOT ◇SELLING DESALINATED WATER



WELL PRODUCTION SERVICES

-KEY FACTORS

Thank to the exclusive Partnership with Power House in Egypt for MPP systems, we can offer full control of the whole service chain, thanks to fully dedicated TASK FORCE, composed by:



-  **The most updated technology that fits with production needs**
 -  **Ultra-fast mobilization and start up: starting from 10 days**
 -  **A dedicated project management team**
 -  **Full control of the whole supply chain**
-
-  **Modularized solutions for production enhancement**
 -  **Dedicated construction & commissioning team**
 -  **Full control of operations**
 -  **A local team 24/7 ready to solve any trouble**



**POWER
HOUSE**

POWER WITHOUT LIMITS



Bonatti

MULTIPHASE PUMPING SYSTEMS

Bonatti WPS offers

LOW TEMPERATURE APPLICATION

technology / main technical features

HIGH TEMPERATURE APPLICATION

Fully Packaged solutions, with 3 standardized "sizes"

SMALL SIZE

based on progressive cavity pumps technology

Pump Flow: **from 73 to 190 Em³/hr (30KBBLPD)**
Pump differential pressure: **from 20 to 60 bar**
Gas Volume Fraction (GVF): **up to 97%**
Pump Installed Power: **up to 160 kW**
Min Suction Pressure: **2 bar**
Max Suction Pressure: **85 bar**



MEDIUM SIZE

based on twin screw pumps technology

Pump Flow: **up to 660 Em³/hr (100KBBLPD)**
Pump Differential Pressure: **from 20 to 60**
Gas Volume Fraction (GVF): **up to 100%**
Pump Installed Power: **600 kW**
Min Suction Pressure: **2 bar**
Max Suction Pressure: **85 bar**



BIG SIZE

based on twin screw pumps technology

Pump Flow: **up to 2700 Em³/hr (400KBBLPD)**
Pump Differential Pressure: **from 20 to 60**
Gas Volume Fraction (GVF): **up to 100%**
Pump Installed Power: **up to 2200 kW**
Min Suction Pressure: **2 bar**
Max Suction Pressure: **85 bar**



All the systems are **remotely monitored by means of proprietary Monitoring System**

*Note: The "E" in front of the flow unit stands for "Equivalent" or in some cases called "Actual" flow, i.e. flow at suction pressure and temperature (when gas portion is compressed to "Suction" as opposed to "Standard").

97% uptime

when installed with premium O&M package

99% GVF

treatable avg. max

16 years

designing, constructing and operating MPPP

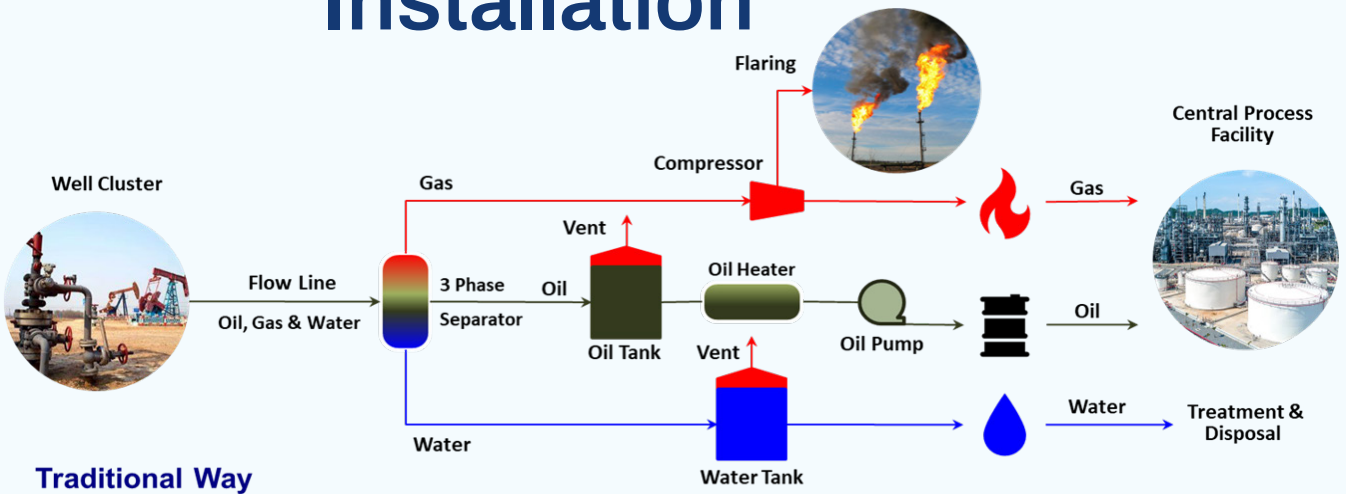
2 bars

min. suction pressure, outlet pressure according to client network (max 93 barg)

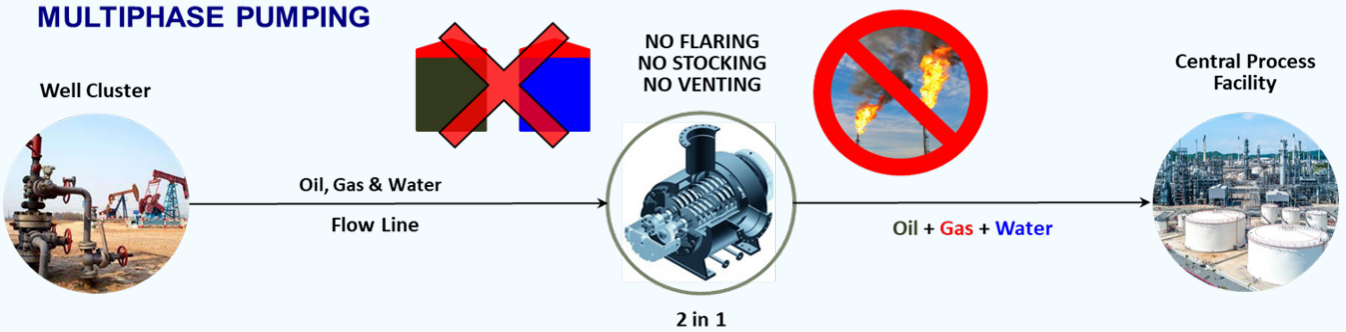
NO FLARING



The Multi phase solution is able to replace Early Production Installation



MULTIPHASE PUMPING



MULTIPHASE PUMPING SYSTEMS

(53 units in operation)

ensuring 98,5% average uptime, applied both to Oil field and Gas Field in onshore applications. Offshore application can be implemented.



MULTIPHASE PUMPING SYSTEMS **TYPE III SIZE**

Multi-skid-mounted equipment, complete also with control cabin, customized solutions can be supplied.

Suitable to work with GVF up to 99%
Fully packaged solution

- ⚡ **Flow rates: 110.000 EBPD
up to 420.000 EBPD at 20 ÷ 60 bar of Δp**
- ⚡ **Min suction Pressure: 2 bar**
- ⚡ **Installed Power: till 2,5 ÷ 2,7 MW**
- ⚡ **Preferable on electrical grid connection**
- ⚡ **Remotely monitored**



ELECTRICAL PRODUCTS & SERVICES

IN STOCK EQUIPMENT-READY FOR RENTAL MAINTENANCE, REPAIR AND OPERATIONS

LOAD BANKS

- ⚡ Heavy-duty resistive load banks of up to 30 MW.
- ⚡ Fine step loads (down to 1 KW).
- ⚡ Can operate on both DC and AC loads (50/60 Hz).



- ⚡ Can operate on both DC and AC loads (50/60 Hz).
- ⚡ Suitable for both onshore and offshore applications.



TRANSFORMERS

step-up and step-down transformers covering a wide range of voltages from 380V to 22,000V.

**LOAD BANKS TESTING 8 MW
POWER STATION
(DIESEL GENERATORS)-SOKARI
MINE**



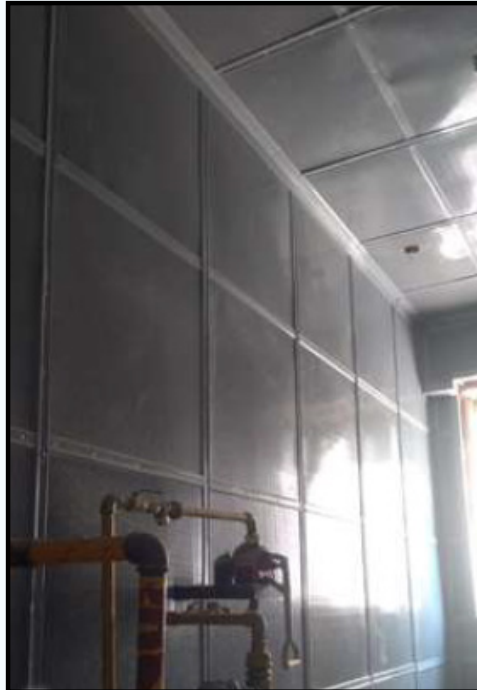
ELECTRICAL PANELS

- ⚡ Certified low voltage panels and medium voltage panels (RMU)
- ⚡ Synchronization panels.
- ⚡ VSDS (variable speed drives) up to 630 KW.
- ⚡ PLCS (programmable logic controllers).

ELECTROMECHANICAL CONTRACTING

Power House undertook a major sound insulation project covering works in 24 ministerial buildings in the new administrative capital of Egypt.

Acoustic insulation for noise and vibration protection is tailored based on customers' requirements. We provide standard soundproofing panels for walls and ceilings as well as industrial-grade acoustic paneling for larger structures.



METALWORKS AND FABRICATION

ENGINEERING, DESIGN AND FABRICATION OF ALL OF THE FOLLOWING:

- ⚡ Heavy steel structures made from rolled sections such as gables.
- ⚡ Fixed or portable storage tanks and containers in accordance with api 620 or api 650 standards.
- ⚡ Custom package skids and plate work.

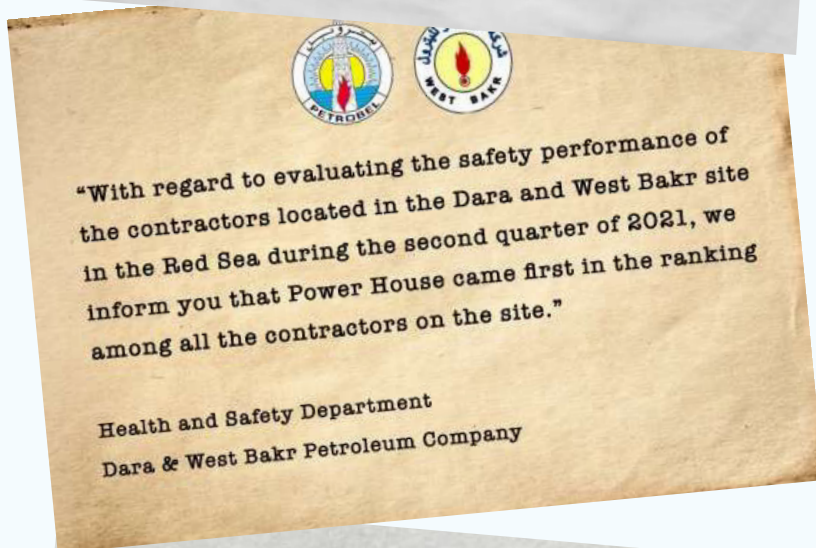
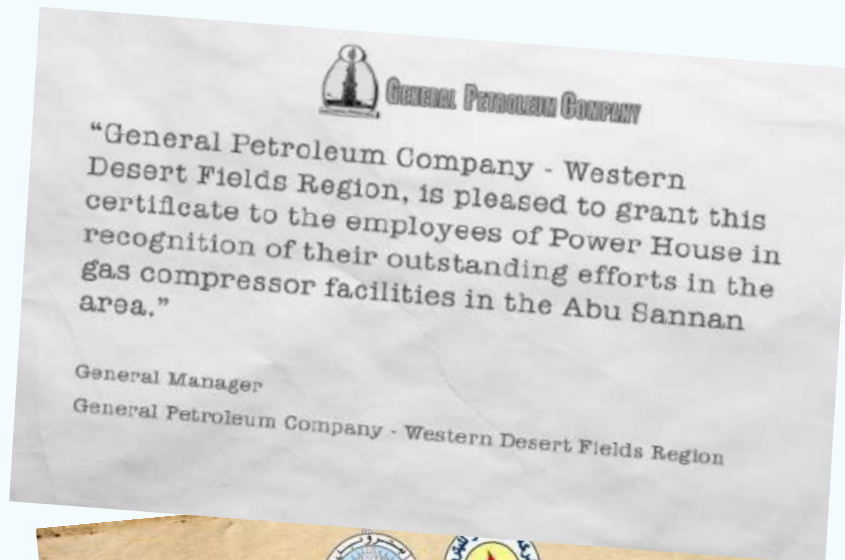


INSPECTION & TESTING SERVICES

OUR EXPERIENCED QUALITY ASSURANCE AND QUALITY CONTROL ENGINEERS ARE HIGHLY TRAINED AND EQUIPPED WITH A RANGE OF ADVANCED INSTRUMENTS FOR NON-DESTRUCTIVE TESTS AND CONDITION MONITORING INCLUDING:

- ⚡ BORESCOPE/VIDEOSCOPE.
- ⚡ LUBRICANT OIL ANALYSIS.
- ⚡ FUEL INJECTION TESTING.
- ⚡ POSITIVE MATERIAL IDENTIFICATION.
- ⚡ MAGNETIC PARTICLE TEST (MPT).
- ⚡ ULTRASONIC TEST.
- ⚡ VIBRATION MEASUREMENT AND ANALYSIS.
- ⚡ BALANCING TEST.
- ⚡ DIESEL INJECTORS AND INJECTION PUMPS TESTING.
- ⚡ THERMAL IMAGING.
- ⚡ WINDING INSULATION MEASUREMENT.
- ⚡ SOUND LEVELS & LIGHTING INTENSITY MEASUREMENT.
- ⚡ GAS DETECTION AND MONITORING.
- ⚡ PUMPS PERFORMANCE TESTING.

CLIENT TESTIMONIALS



OUR PEOPLE

we owe our success to each and every member of our team. our employees bring a diversity of thought, creativity, perspectives, opportunities, and problem-solving to **Power House**.



OIL AND GAS SECTOR

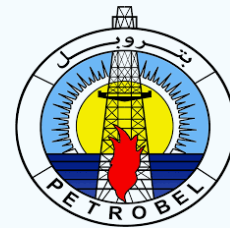
- ⚡ **Agiba “Faras” gas generators**
- ⚡ **Agiba “Sweem” Gas generators**
- ⚡ **ZEITCO Abu Rudeis Gas generators**
- ⚡ **Petrobel gas generators**
- ⚡ **General Petroluem Gas compressor**
- ⚡ **El Bahraneya diesel gens and air compressors**
- ⚡ **El Amal gas compressor**
- ⚡ **WEPCO gas compressor**
- ⚡ **Dublin gas generators**
- ⚡ **Badr Eldin diesel generators and pumps**
- ⚡ **Petro Gulf Diesel generators**
- ⚡ **Petrojet NGU project**

NON OIL AND GAS SECTOR

1. **El Sokary Mine:** Load Bank Rentals & load testing services + Water Pumps+ Electric Diesel & Gas Generator services
2. **Makadi Station:** Water Desalination+ Water Pumps
3. **Flotex:** Electric Diesel & Gas Generator services (Renting Diesel Generators)
4. **Halima Farms (East Oweinat):** Electric Diesel & Gas Generator services
4. **Halima Farms (East Oweinat):** Electric Diesel & Gas Generator services (Renting Diesel Generators)
5. **Egyptian Steel:** Electric Diesel & Gas Generator services + Electrical Power Transformers Services +Electric panels services
6. **Gamasa:** Compressors
7. **6th of Oct. Steel Warehouse:** Steel Structures and frames
8. **Petrojet:** Electric Diesel & Gas Generator services+ Mobile Air Conditioners+ Water Pumps
9. **Palm Park:** Electric Diesel & Gas Generator services (Renting Diesel Generators) + Electrical Power Transformers Services +Electric panels services
10. **Oriental Bay:** Electric Diesel & Gas Generator services (Renting Diesel Generators)
11. **El Ghanem:** Electric Diesel & Gas Generator services (Renting Diesel Generators)
12. **New Admin. Capital:** Sound and Thermal Insulation
13. **Electricity Co. Borg El Arab Station 2:** Testing generators using load banks

OUR PARTNERS

OIL AND GAS SERVICES



INTEGRATED SERVICE PROVIDER





ELECTROMECHANICAL CONTRACTING - METALWORKS





CONTACT US



Our offices are located at:
Area 75 – 6th Industrial Zone
6th of October City, Giza 12581, Egypt



Sales@powerhouseegypt.com



(+20) 12 2398 0045
